



Mountain & Slope Risks Project

Research Training Network 2007 - 2010



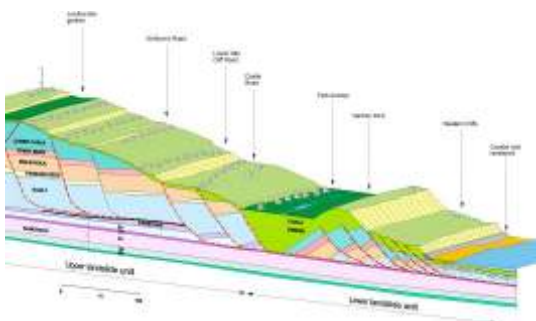
Project Partner: Isle of Wight Centre for the Coastal Environment, Isle of Wight Council, UK

Summary

The Isle of Wight Council's Centre for the Coastal Environment is taking part in a 4-year project funded by the European Union's 'Marie Curie Research Programme' investigating the growing dangers associated with landsliding and slope failure. The 4-year project started on January 1, 2007.

14 organisations from across Europe are participating in the 'Mountain Risks' Network, led by the University of Caen-Basse-Normandie in France. The Isle of Wight is contributing its experience of reducing the impacts of landsliding on coastal communities such as Ventnor and Cowes, which have benefitted from active investigation and reduction of risk levels in recent decades, processes which are continuing today.

The Isle of Wight will benefit from the wealth of expertise of the Network members in understanding landslide hazards, and also host several 3-month Postgraduate student placements during the project who will conduct new research on the Isle of Wight's evolving coastal slopes.



The EU funded Network will assist co-ordination and improvement of landslide research across Europe, and provide over 18 research posts at the participating institutions on key topics to further knowledge of this growing hazard in a changing climate.

Objectives of the project

Research and training in all aspects of mountains hazards and risks assessment and management.

This European network intends to develop an advanced understanding of how mountain hydro-geomorphological processes behave and to apply this understanding to living with the hazards in the long-term.

Partners

Mountain Risks is coordinated by the Department of Physical Geography and the Environment, University of Caen-Basse-Normandie, Caen, France and the CNRS.

The Project involves 14 partners institutes throughout Europe, bringing together leading international experts in this field, to host Ph.D (Early-Stage Researcher -ESR) and Post-Doc (Experienced Researcher -ER) training positions. Most positions will be filled in 2007, 2008 and 2009.

Funding Stream

Mountain Risks is a Marie Curie Research Training Network in the 6th Framework Research Program of the European Commission.



Supporting the Isle of Wight

The Isle of Wight Centre for the Coastal Environment fulfils the Councils functions in relation to coastal and geotechnical issues.



www.unicaen.fr/mountainrisks